

**26-116 / 26-120**  
**EXTENDED TOP BRACKETS**  
**for genesis 250/300**  
**will fit \*E-Z-GO® TXT® / T48**  
**INSTALLATION INSTRUCTIONS**



**INCLUDED:**

Front Brackets  
Rear Brackets  
Struts  
Hardware Pack

**TOOLS NEEDED:**

Cordless Drill  
13mm Socket  
13mm Wrench  
10mm Socket  
5/16" Drill bit  
C-Clamps



Rear Brackets

Front Brackets

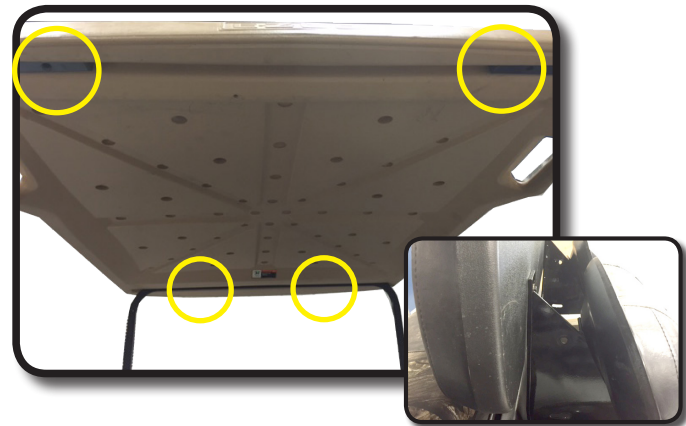


Rear Struts

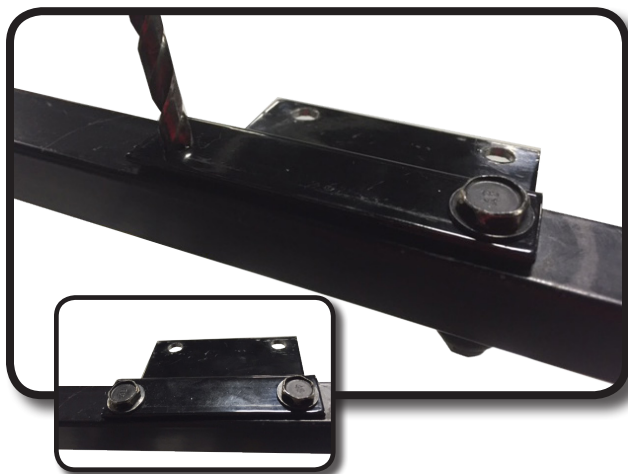
**We recommend professional installation. If you choose to not have this product installed by a professional, we highly recommend that you exercise caution, care, and patience when installing this product as it involves drilling holes into your cart's body.**

1

Remove factory canopy and rear struts. Retain hardware that is used to attach rear struts to G250/300 main bracket.



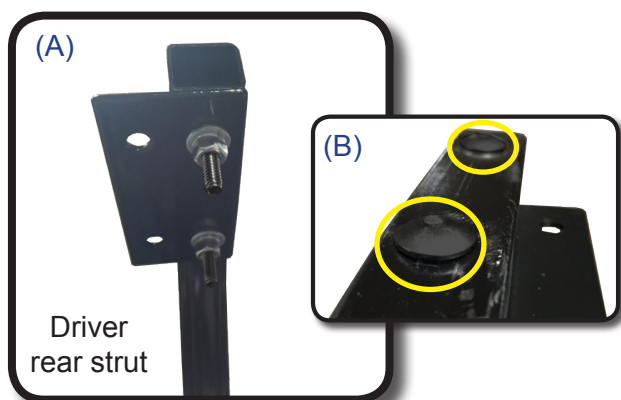
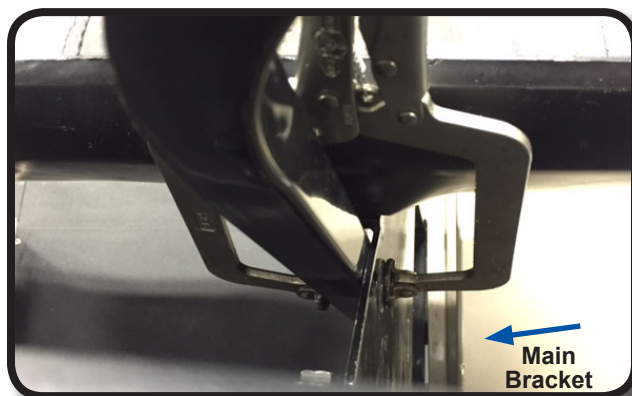
2  
Attach front brackets to front struts using 8mm x 40mm hardware in factory mounting locations as shown. Tighten hardware.



Using a 5/16" bit, drill through strut using front bracket as a guide as shown. Use 8mm x 40mm bolts and 8mm Nylock nuts and tighten.

Using C-clamps attach rear struts to G250/300 main brackets with tops of struts pointed to rear of cart.

*NOTE: Do not permanently attach rear struts until step 8.*



**A)** Attach rear brackets to rear struts using 6mm x 40mm carriage bolts as shown. Be sure to mount bracket using the smaller diameter holes.

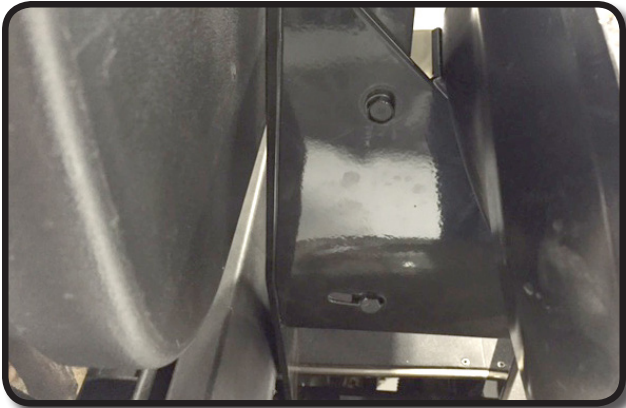
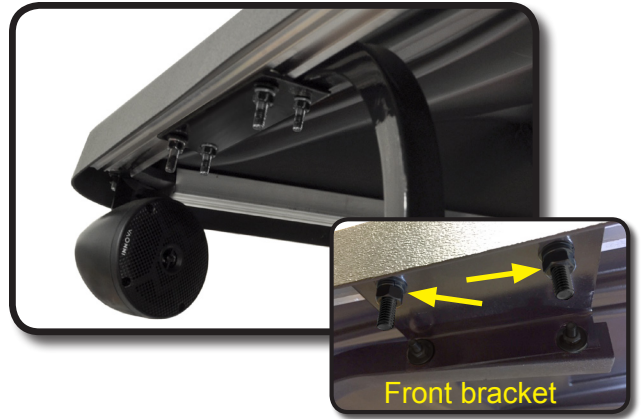
**B)** Carriage bolt will secure to strut once hardware is tightened.

Now insert two 8mm x 25mm carriage bolts into side extrusion at each corner of top. These bolts will secure top extrusion to strut brackets.



# 7

Connect the strut brackets to the top extrusion using 8mm carriage bolts, hand tighten hardware first. Once all bolts are in place then tighten.



Now that your top is attached the rear struts can be secured. Using C-clamps set rear struts to desired height. Using a 5/16" bit, drill through struts using main mounting bracket holes as a guide. Attach with 8mm hardware included with your seat kit.

# 8

## Installation Complete

## HARDWARE PACK

### (Dacromet Coated)

- 4 - 6mm x 40mm carriage bolts
- 4 - 8mm x 40mm Hex head bolts
- 8 - 8mm x 25mm carriage bolts
- 4 - 6mm lock washers
- 4 - 6mm flat washers
- 4 - 6mm nuts
- 8 - 8mm lock washers
- 16 - 8mm Flat washers
- 4 - 8mm Nylock nuts
- 8 - 8mm Nuts

