



# LED LIGHT KIT

WILL FIT \*E-Z-GO® RXV® (2015 & Older)

## INSTALLATION INSTRUCTIONS

### KIT CONTENTS:

LED Headlights  
LED Tail Lights  
Upgrade Harness  
Mounting Screws  
Zip Ties  
Light Switch

### TOOLS NEEDED:

#2 Phillips Tip  
Cutting Tool  
Sandpaper  
Power Drill  
15/32" Drill Bit  
Marking Pen  
Scissors  
Tape  
Safety Glasses

LED Headlights



Light Switch

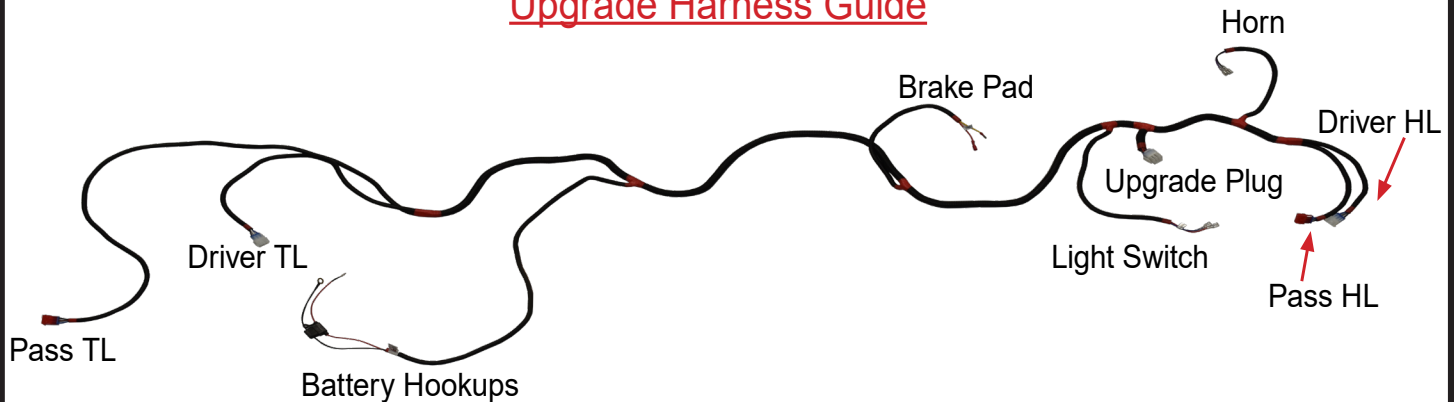



Upgrade Harness



LED Tail Lights

### Upgrade Harness Guide



 Scissors & Tape

Engage Parking Brake and turn key to the OFF position. Cut out tail light template and place it against cart using the body lines and notes on template for alignment.

Draw the inside of the template out with a marking pen. **\*Flip template over for opposite side.**




 15/32" Drill Bit, Safety Glasses, & Rotary Cutting Tool

**Drill a pilot hole so you will have a starting point to begin cutting.**

Using the template you drew on the car, cut out the light area of the body starting at the pilot hole. Use sandpaper to clean edges.




 #2 Phillips Tip

Place **Tail Light** into the rear of the vehicle. Secure tail light using supplied screws.

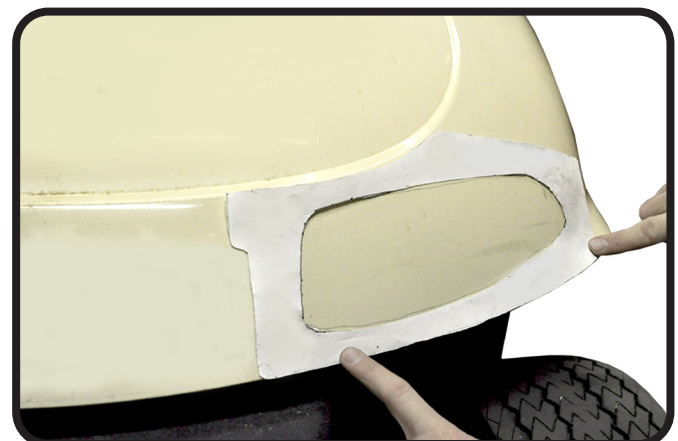
**\*Repeat steps 1-3 on opposite side.**  
**NOTE: Red 3 pin Connector's are for passenger side lights.**



 Scissors & Tape

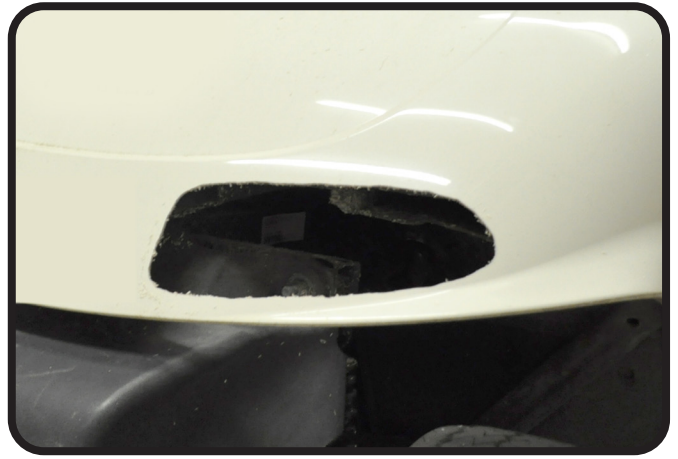
Place headlight template against cart using the body lines for alignment. Draw the inside of the template out with a marking pen.

**\*Flip template over for opposite side.**



 15/32" Drill Bit, Safety Glasses, & Rotary Cutting Tool

5  
Drill a pilot hole and cut out the shape of the headlight. Use sandpaper to clean edges.



6  
Insert **LED Headlights** into cowl and attach to car using clips located behind the headlight. Ensure the headlight mounting clips engage behind cowl.




**Repeat Steps 4-6 on opposite side.**

7  
Run wiring harness beside the frame so it doesn't hang. Secure with wire ties to avoid damage to harness.

Secure wiring harness in a battery box allowing for easy battery connections.



**NOTE:** Red 3 pin connectors are for passenger side lights.

 15/32" Drill Bit

8  
Using a 15/32" bit, drill out the hole for the **Light Switch** at your desired location.

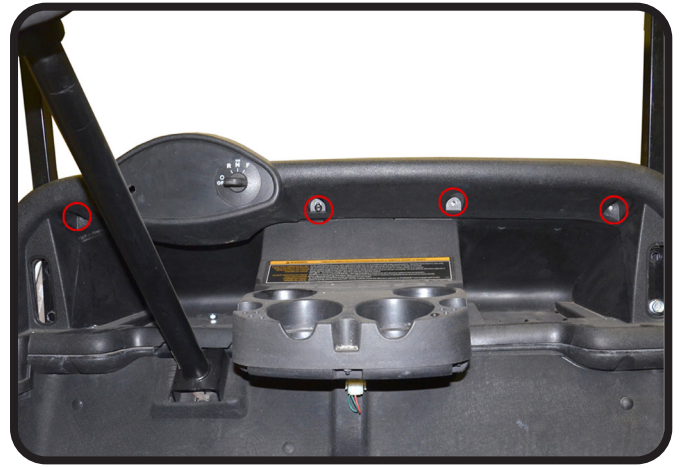


**\*Check before drilling and ensure mounting location is free of obstacles.**



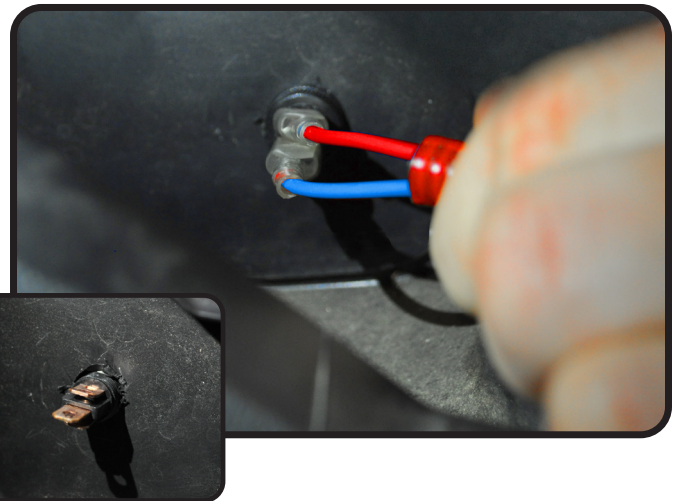
T30 Torx Socket

Remove torx head screws along front brow to gain access to the instrument panel. Retain hardware for reinstallation. **\*Do not completely remove brow.**



Feed threaded end of switch through the dash where the hole was drilled.

Attach harness to switch, there is not wire orientation. Attach nut to secure and reattach dash panel.

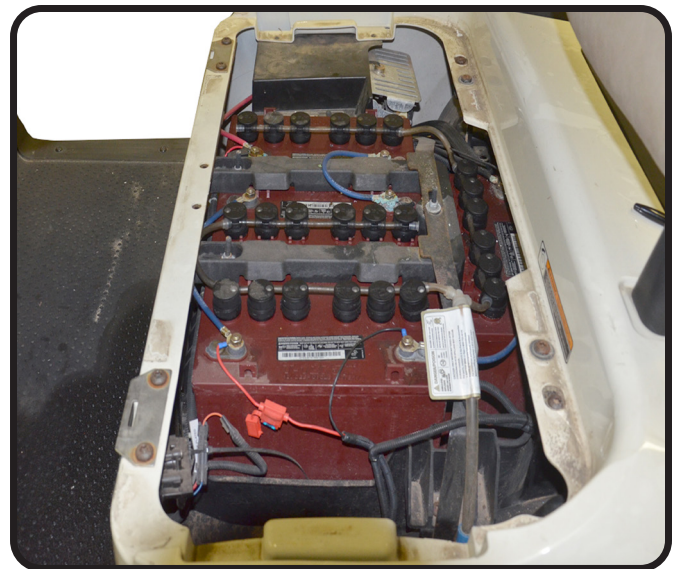


## Battery Pack Connections

**IMPORTANT:** This light kit is designed for 12V power. A 48-12v or 16-12 voltage reducer will be needed if no 12v power is available. Follow your reducer instructions for proper installation.

Connect the wiring harness to one battery's positive connection and another battery's negative connection as shown. Be sure the two batteries used are directly linked to together.

**CAUTION:** THIS LIGHT KIT IS A 12V SYSTEM. SUPPLYING MORE THAN 12V TO THE SYSTEM WILL DAMAGE THE LIGHT KIT AND VOID YOUR WARRANTY. DO NOT OVERLOAD.



# INSTALLATION COMPLETE