

02-079



## LIGHT KIT

WILL FIT E-Z-GO® RXV®

### INSTALLATION INSTRUCTIONS

#### INCLUDED:

- 2 Headlights
- 2 Taillights
- 1 Wiring Harness
- 8 Screws
- Straps



Wiring Harness



8 Screws



Tail Lights

Straps

Headlights

We recommend professional installation. If you choose to not have this product installed by a professional, we highly recommend that you exercise caution, care, and patience when installing this product as it involves drilling holes into your cart's body.

1  
Cut out template and place it against cart using the body lines for alignment.



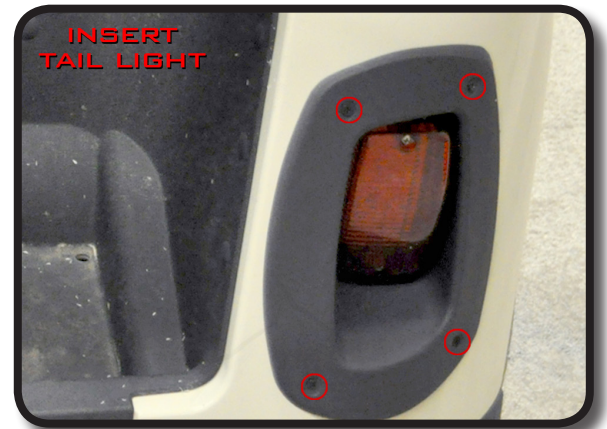
2  
Draw the inside of the template out with a writing utensil. Next drill a pilot hole so you will have a starting point to begin cutting.



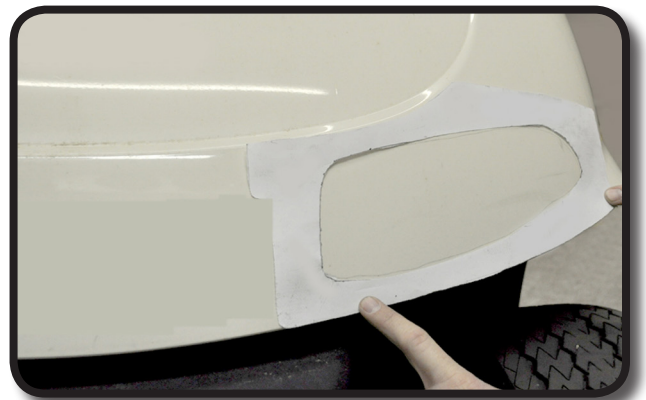
3  
Using the template you drew on the cart, cut out the light area of the body starting at the pilot hole from step 2.



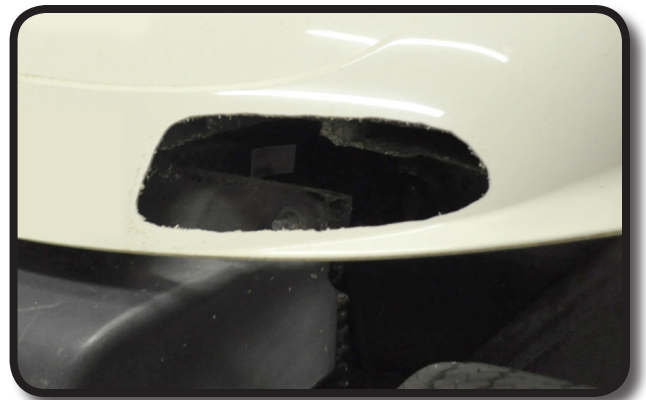
4  
Place tail light into the rear of the vehicle. Insert four screws into Tail light using supplied hardware.  
\*Repeat process on opposite side



5  
Place headlight template against cart using the body lines for alignment. Draw the inside of the template out with a writing utensil.



6  
Drill a pilot hole and cut out the shape of the headlight.



7  
Insert headlight and attach to cart using clips located behind the headlight.



8  
Run wiring harness down the side of the frame of the cart as shown.



9  
Run wiring harness beside the frame so it doesn't hang. Secure it with wire ties to keep it in place while you are riding.



10  
Using a 15/32" drill bit, drill out the hole for the rocker switch. \*Drill gently.





# 11

Unscrew torx-head screws and remove dashboard. Retain hardware. \*Do not remove completely.

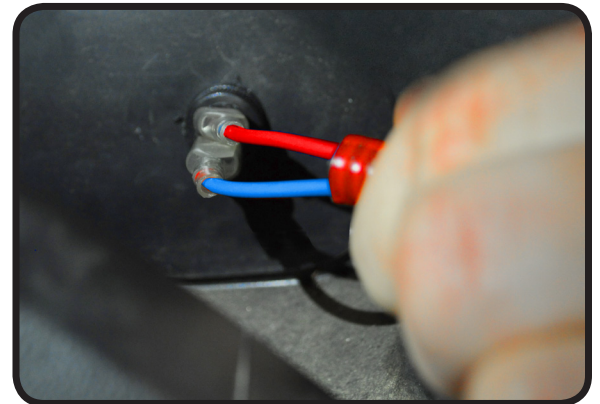


# 12

Feed threaded end of switch through the dash where the hole was drilled. Attach the nut to secure.

Supply- 12v(+) constant (Red)  
Load- 12v(+) switched (Blue)

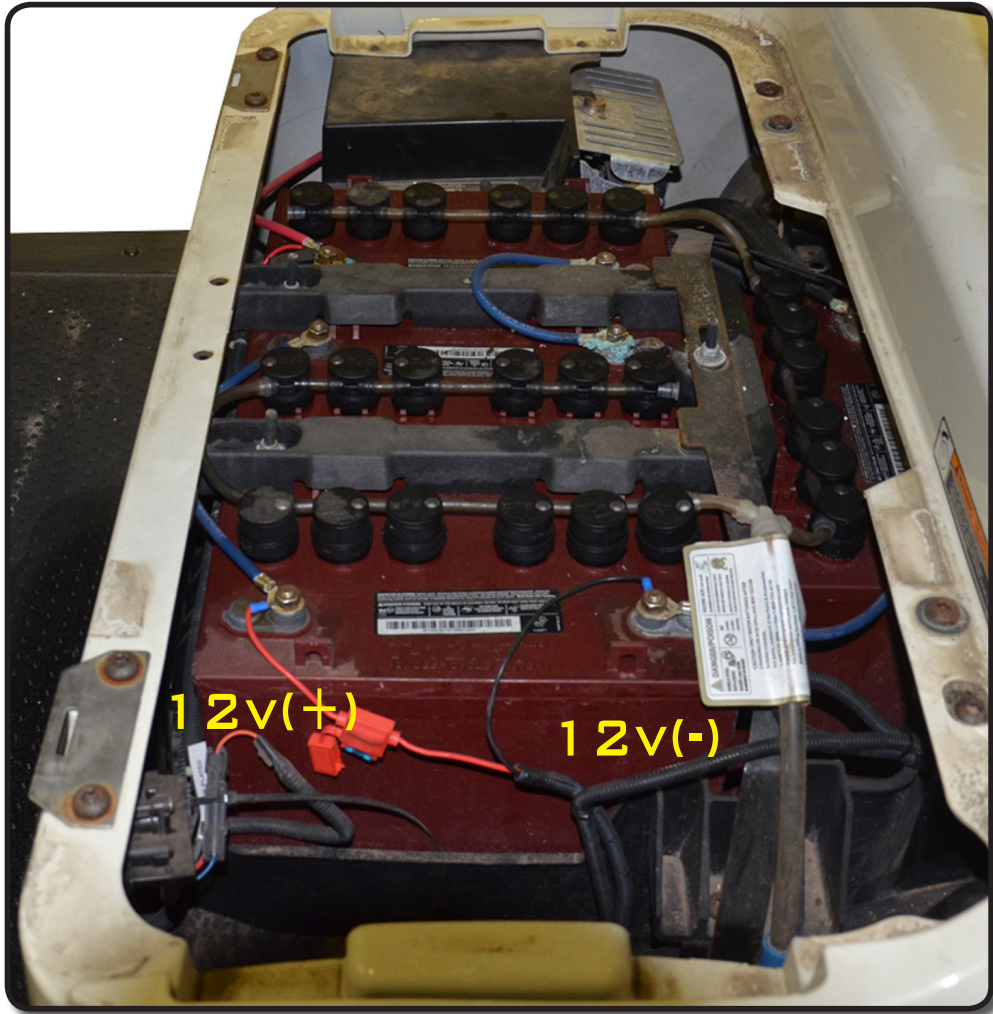
Attach harness to Rocker Switch.



# 13

Secure remaining harness under cowl using provided ties.





14

If you have 12 volt batteries wire the harness to the battery as shown. If you have 8 Volt batteries a 16/12 voltage reducer will be necessary.

***CAUTION: This light kit is a 12v system. Supplying more than 12v to the system will damage the light kit and void your warranty. Do not overload.***

**INSTALLATION COMPLETE**

E-Z-GO®, E-Z-Go® TXT®, and E-Z-Go® RXV® are registered trademarks of Textron Innovations, Inc. Club Car®, Club Car® Precedent®, and Club Car® DS® are registered trademarks of Ingersoll Rand, Inc. Yamaha®, Yamaha® Drive®, G-14®, G-16®, G-19®, and G-22® are registered trademarks of Yamaha Golf-Car Company. Any reference to Club Car®, E-Z-Go®, or Yamaha® or their associated trademarks, word marks, and products are only for purposes of identifying golf carts with which this GTW product is compatible. GTW products are aftermarket parts and are not original equipment parts. GTW is not connected to, affiliated with, sponsored by, or endorsed by either Textron Innovations, Inc., Ingersoll Rand, Inc., Yamaha Golf Cart Company, or any of their parent or subsidiary companies.